

# THE LAKEVIEW

*The Patio Homes at Hartwood Village*



## FEATURES

- ◆ Low E/Argon gas vinyl windows
- ◆ Interior of garage finished same as the house
- ◆ 92% High Efficiency gas furnace
- ◆ 9' Ceilings throughout
- ◆ “Premium Plank” LTV floors at Foyer, Kitchen, and Dining
- ◆ Ceramic tile floors at baths and laundry
- ◆ Aristokraft Landen cabinets with MCrown molding in kitchen
- ◆ Prewire for Under Cabinet Lighting in Kitchen
- ◆ \$700 kitchen backsplash allowance (L/M)
- ◆ Granite tops in kitchen and baths
- ◆ Masonite Painted Interior Doors
- ◆ \$1,000 Shower Door Allowance
- ◆ \$1,800 Light Fixture Allowance
- ◆ \$3,500 Appliance Allowance
- ◆ Landscape Package with sodded front yard
- ◆ 2/10 RWC Residential Warranty

**For Sales Information:**

**Eunice Wagner**

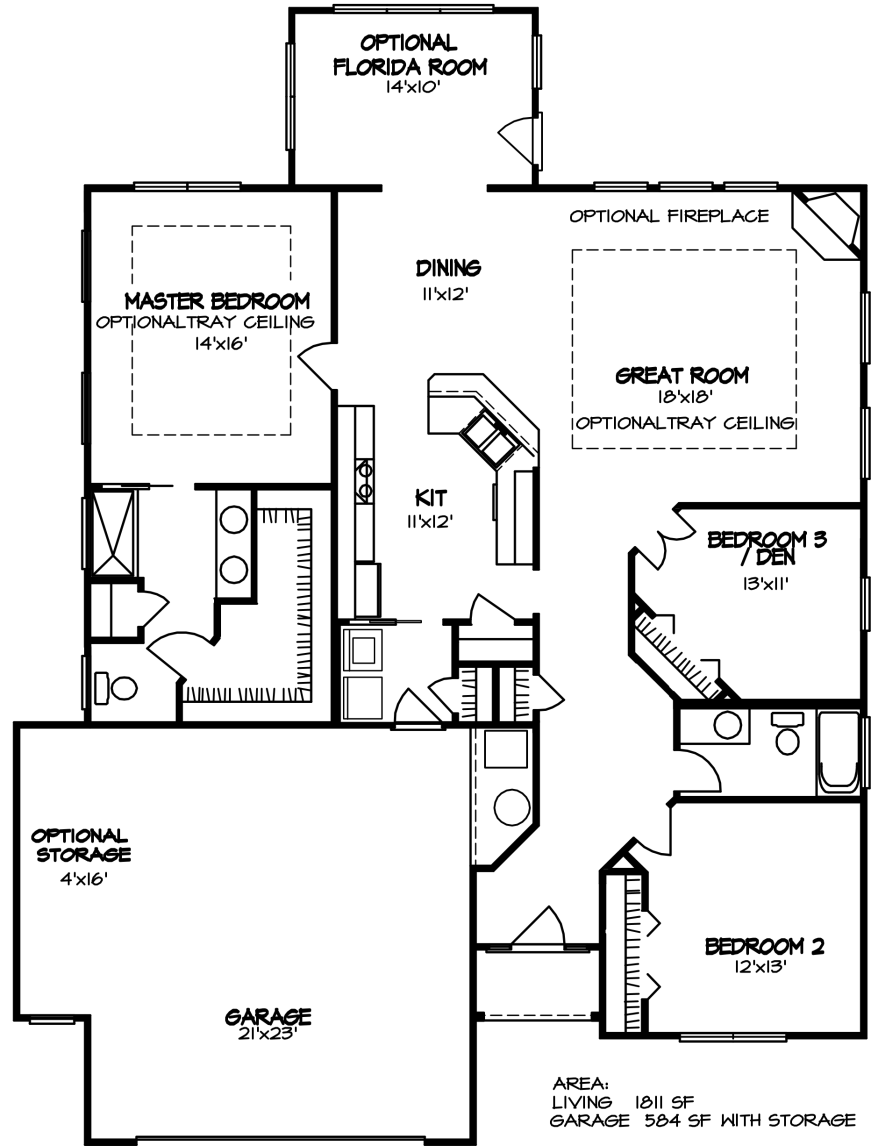
Eunice@CitationhomesInc.com

**765-427-8814**

Visit us online at **[www.CitationHomesInc.com](http://www.CitationHomesInc.com)**

*The illustrations in this brochure are the artist's conceptions and are subject to change without notice.*

# THE LAKEVIEW



THE LAKEVIEW IN HARTWOOD VILLAGE

Visit us online at [www.CitationHomesInc.com](http://www.CitationHomesInc.com)

*The illustrations in this brochure are the artist's conceptions and are subject to change without notice.*