

# THE ALEXANDER



## Interior Features

- ◆ 9' Ceilings on First Floor
- ◆ Aristokraft "Staggered" Kitchen Cabinets with Crown Molding
- ◆ \$2300 Appliance Allowance
- ◆ Direct Vent Range Hood
- ◆ Ceramic Tile in Kitchen Backsplash
- ◆ Raised Master Bath Vanity
- ◆ Ceramic Tile Floors in Baths and Laundry
- ◆ Laminate Plank Flooring in Foyer, Kitchen, and Nook

## Exterior Features

- ◆ Landscape Package, including Mailbox
- ◆ Garage Door with Windows and Opener
- ◆ 30 Year Dimensional Shingles
- ◆ Energy Efficient Argon Windows
- ◆ 2/10 RWC Residential Warranty

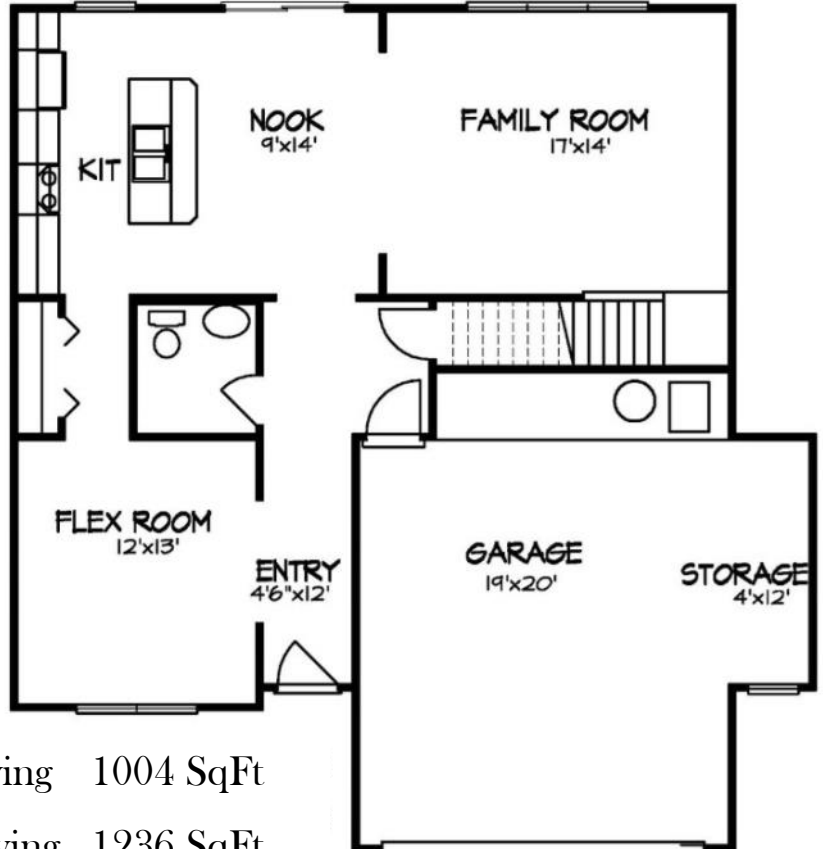
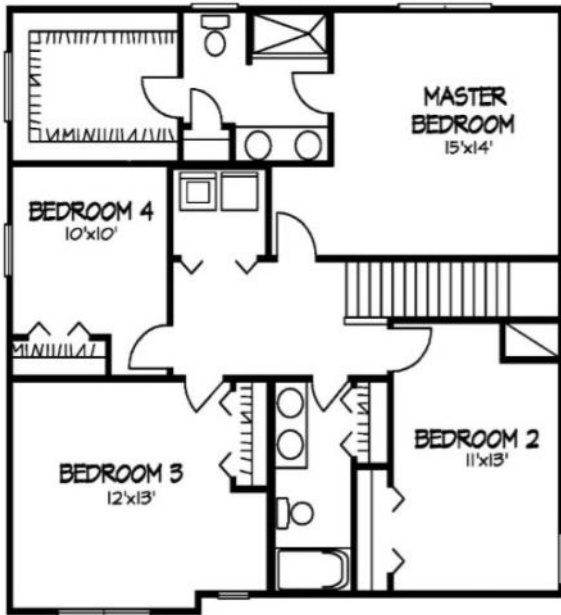
**For Sales Information Call:**

**(765)449-8339**

Visit us online at [www.CitationHomesInc.com](http://www.CitationHomesInc.com)

*The illustrations in this brochure are the artist's conception and are subject to change without notice*

# THE ALEXANDER



1 <sup>st</sup> Floor Living	1004 SqFt
2 <sup>nd</sup> Floor Living	1236 SqFt
Total Living	2240 SqFt
Garage	437 SqFt

Visit us online at [www.CitationHomesInc.com](http://www.CitationHomesInc.com)

*The illustrations in this brochure are the artist's conception and are subject to change without notice*