

THE BENTON



The Patio Homes at Winding Creek



FEATURES

- ◆ 9' Ceilings
- ◆ Granite Kitchen Countertops
- ◆ Over-sized Walk-in Pantry
- ◆ \$3500 Appliance Allowance
- ◆ \$2000 Lighting Allowance
- ◆ Finished Interior Garage
- ◆ Staggered Cabinets with Crown Molding
- ◆ Ceramic Tile Flooring in Baths & Laundry
- ◆ 92% High Efficiency Gas Furnace
- ◆ Energy Efficient Clad Wood Windows
- ◆ Hardi Plank Siding
- ◆ 30 Year Dimensional Shingles
- ◆ Landscape Package w/ Sodded Front Yard
- ◆ 2/10 RWC Residential Warranty

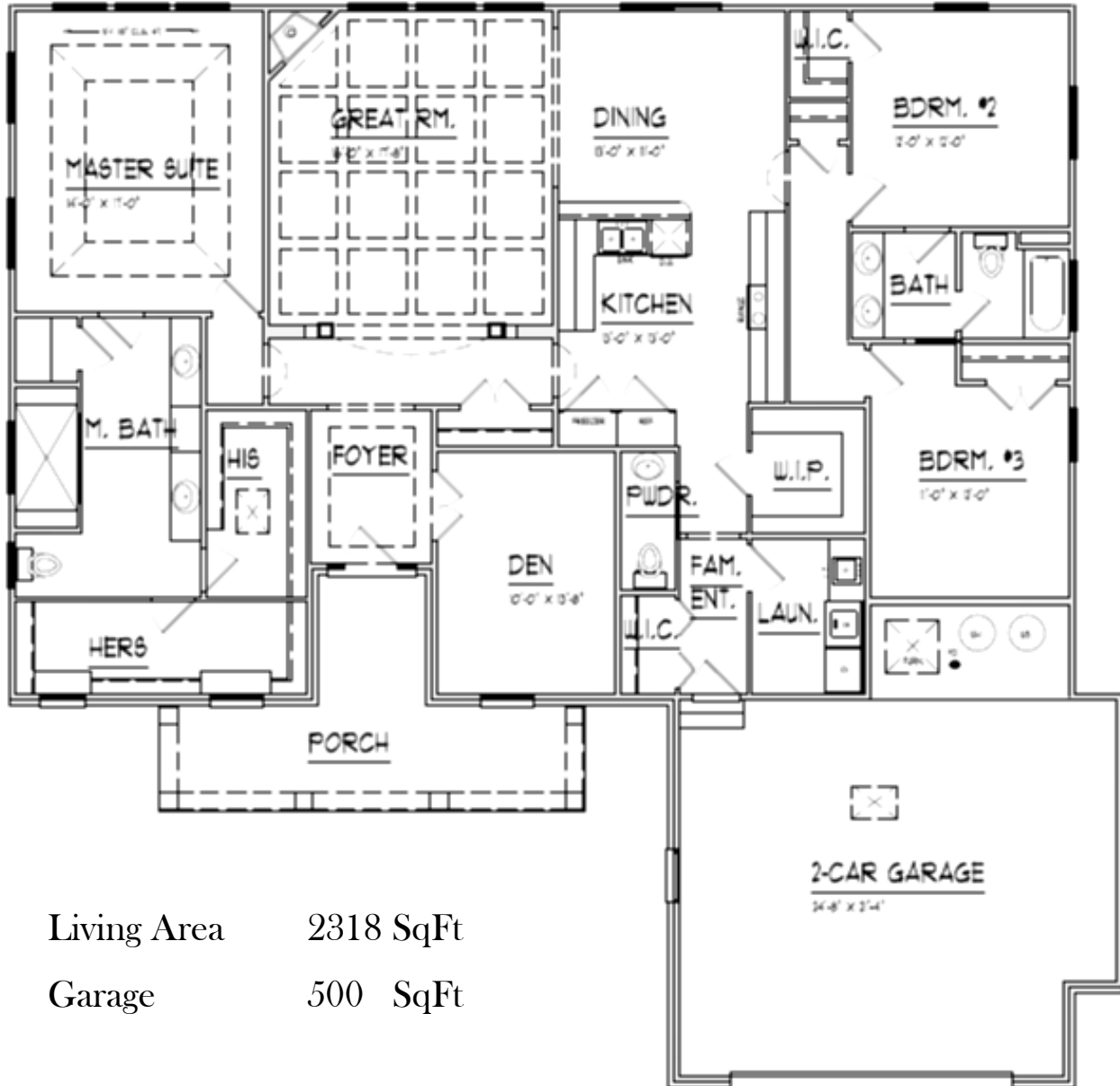
For Sales Information Call:

(765)449-8339

Visit us online at www.CitationHomesInc.com

The illustrations in this brochure are the artist's conception and are subject to change without notice

THE BENTON



Living Area 2318 SqFt

Garage 500 SqFt

Visit us online at www.CitationHomesInc.com

The illustrations in this brochure are the artist's conception and are subject to change without notice