

THE ENCLAVE



The Patio Homes at Winding Creek



5123 Flowermound Drive - Winding Creek Lot 20

FEATURES

- ◆ 9' Ceilings
- ◆ Granite Kitchen Countertops
- ◆ \$3500 Appliance Allowance
- ◆ \$2000 Lighting Allowance
- ◆ Finished Interior Garage
- ◆ Staggered Cabinets with Crown Molding
- ◆ Ceramic Tile Flooring - Baths & Laundry
- ◆ 92% High Efficiency Gas Furnace
- ◆ Energy Efficient Clad Wood Windows
- ◆ Hardi Plank Siding
- ◆ 30 Year Dimensional Shingles
- ◆ Landscape Package with Sodded Front Yard
- ◆ 2/10 RWC Residential Warranty

For Sales Information Call:

(765)449-8339

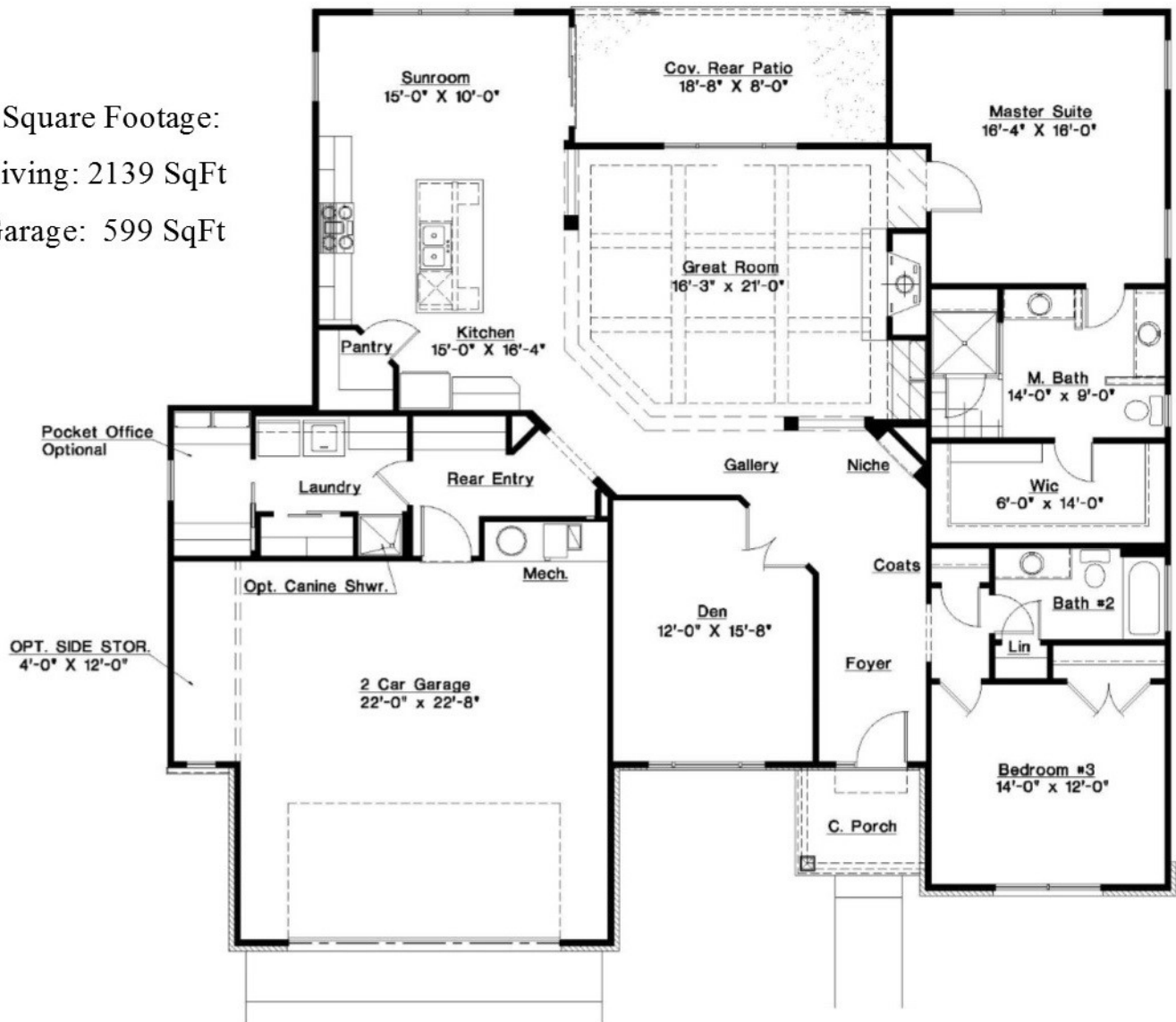
Visit us online at www.CitationHomesInc.com

The illustrations in this brochure are the artist's conceptions and are subject to change without notice.

THE ENCLAVE



Square Footage:
Living: 2139 SqFt
Garage: 599 SqFt



Visit us online at www.CitationHomesInc.com

The illustrations in this brochure are the artist's conceptions and are subject to change without notice.